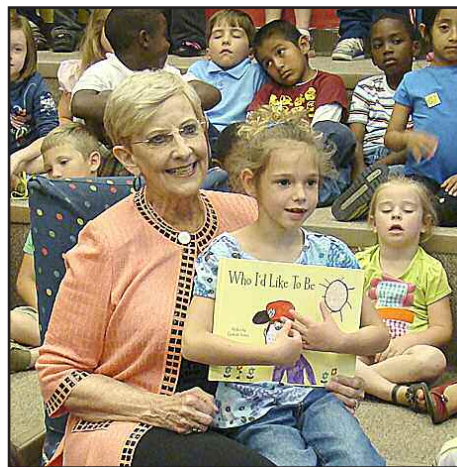
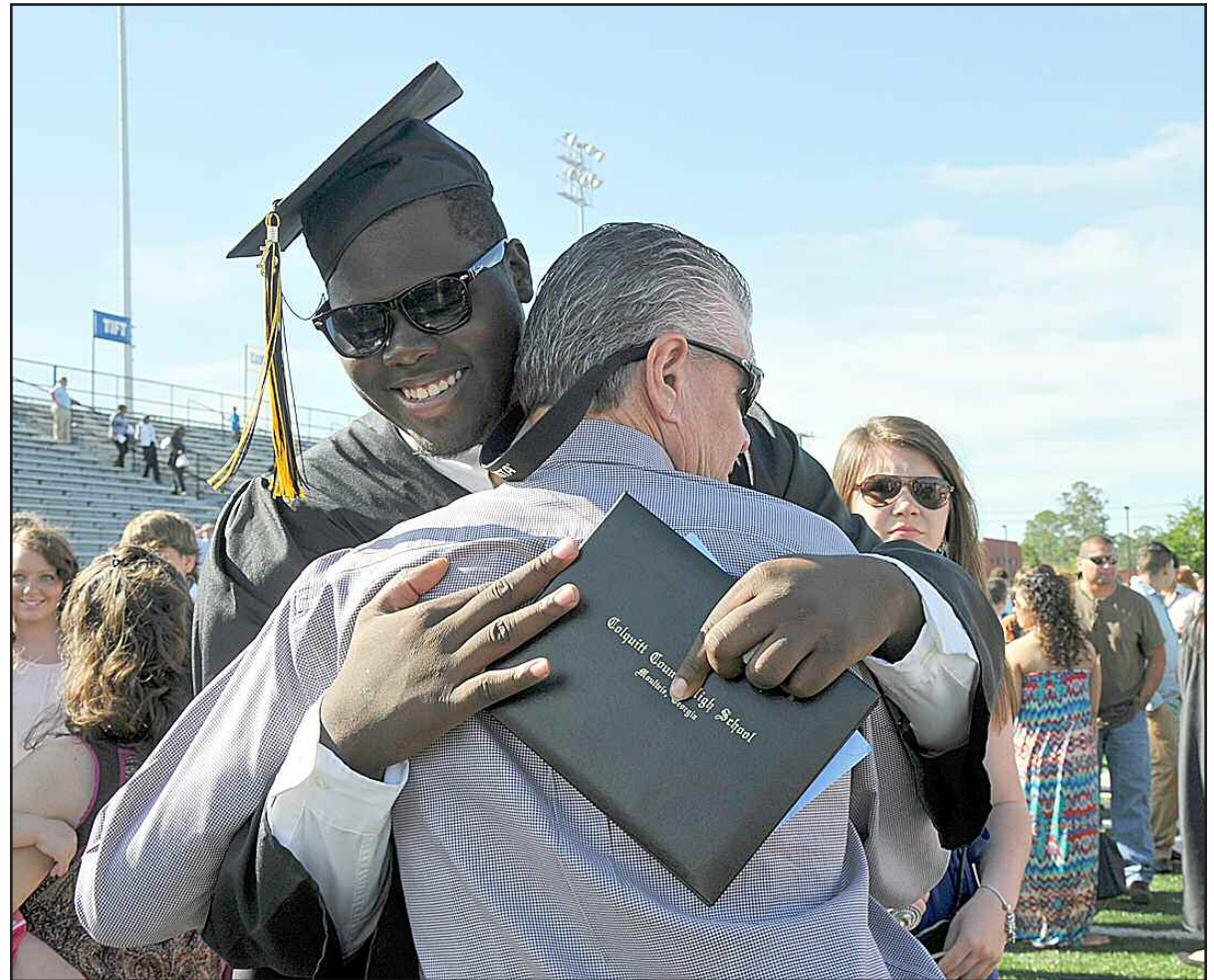


Back to School

\$1

2013-2014 school calendar



Brought to you by **The Moultrie Observer** and the businesses and merchants inside

817684



DIAMONDS...

ALL SHAPES AND SIZES • COMPLETE CUSTOM JEWELRY SERVICE.
WE WILL CUSTOM DESIGN ANY JEWELRY ITEM.

GRINER JEWELRY CO.

ON THE SQUARE

30-1ST AVENUE, SE • MOULTRIE, GEORGIA • 985-3700

WWW.GRINERJEWELRYCO.COM





SALA NEWSOME,
R. Ph.

The **Prescription
Shoppe** 

203 - 31st Ave., S.E. • Moultrie
(Across from Hospital)
229-985-9296
24-Hour Refill Line - 985-2698
Mon. - Fri. 9:00 a.m. - 6:00 p.m.
Saturday 9:00 a.m. - 1:00 p.m.



GREG YARBROUGH,
R. Ph.

**Westside
Pharmacy** 

720 W. Central Ave. • Moultrie
(Next to Oxley's)
229-890-6054
24-Hour Refill Line - 985-2698
Mon. - Fri. 9:00 a.m. - 6:00 p.m.
Saturday 9:00 a.m. - 1:00 p.m.

143595



Something Different

OF MOULTRIE
Come Join Us For Lunch & Dinner

*We are carrying on the family tradition of American-owned & operated!
We appreciated your support and patronage!*

229-985-4159

www.dairyqueen.com

2616 First Avenue, S.E. Moultrie, GA



818622

About the cover

Last school year offered many highlights, and the 2013-14 year promises even more. Photos on the cover show some of Colquitt County Schools' bright spots from the 2012-13 year:

FIRST DAY OF SCHOOL, top left: Sunset Elementary School students Ryan Smith, a fourth grader, and Skylar Snipes, who is in kindergarten, get off the bus at the YMCA after their first day of school Aug. 8, 2012. They attended Primetime afterschool program. (Photo by Connie Southwell)

A VISIT FROM THE FIRST LADY, bottom left: On May 8, Sandra Deal, the first lady of Georgia, read to pre-k and kindergarten classes at Funston Elementary School. This visit was part of her extended Read Across Georgia initiative. (Submitted photo)

TEACHER OF THE YEAR, bottom center: Georgia teacher of the year finalist Jeanine Wetherington, center, was the recipient of a surprise ice cream party for the entire Norman Park Elementary student body March 25. Presenting ice cream to Wetherington and school Principal Keith Adams is Farrell Fontetot of Blue Bell Creameries. (Submitted photo)

GRADUATION, right: Octavius Jackson embraces Coach Rush Propst after receiving his diploma Saturday at the Colquitt County High School graduation exercise at Mack Tharpe Stadium. (Photo by Connie Southwell)

CRYSTAL PHARMACY

Serving Moultrie & Colquitt County Since 1923



Open: Mon.-Fri.
8:30 am - 6:00 pm
Sat. 8:30 am - 1 pm

985-4137

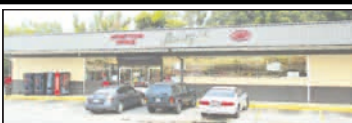
**705 S. Main St.
Moultrie, GA**

817663

Oxley's
HOMETOWN PROUD 



11 - 8TH AVENUE, N.E.



818 WEST CENTRAL AVE.



501 VETERANS PARKWAY SOUTH

3 Moultrie Locations to Serve You!

Hometown Proud

Family Owned and Operated

Since 1940

816642

Colquitt County Board of Education

Colquitt County Board of Education

710 28th Ave. S.E.
Phone 985-1550
www.colquitt.k12.ga.us

The Colquitt County School System dates back to 1873 when it was created to govern rural schools. It was joined in 1896 by a Moultrie City School System.

The two systems co-existed until 1968, when Moultrie residents voted to merge with the county system; since then, all public schools in the county have been governed by the Colquitt County Board of Education.

Board of Education

The board consists of six members, each elected by district. Terms are four years and staggered so that half the board is up for election every two years. Members vote once a year for chairman and vice chairman.

DISTRICT 1

Trudie Mae Hill
1313 Bayleaf Drive, Moultrie, GA 31768
E-mail: tmaehill@moultriega.net
Phone: (229) 985-4935

Hill, a retired teacher from Colquitt County High School, took office in June 2004.

DISTRICT 2

Bobbie Key
P.O. Box 245; Norman Park, GA 31771
E-mail: bobbiekey@windstream.net
Phone: (229) 769-3232

Key, a retired principal from Okapilco Elementary, took office in January 2013.

DISTRICT 3

Mary Beth Watson
P.O. Box 2167; Moultrie, GA 31768
E-mail: mb@jwic.net
Phone: (229) 985-0044

Watson, a real-estate developer, took office in January 2013.

DISTRICT 4

Roy Reeves, Chairman
P.O. Box 98; Moultrie, GA 31776
E-mail: royreeves@windstream.net
Phone: (229)985-9710 home; (229) 985-1736 work.

Reeves, owner of Reeves Properties, took office in January 1995.



Submitted photo

From left, new school board members Kevin Sumner of District 6, Bobbie Key of District 2 and Mary Beth Watson of District 3 take the oath of office, administered by Probate Judge Wes Lewis, right. The three joined the board for the first time in January after winning elections the previous July. Other members of the Colquitt County Board of Education are Patricia Anderson, District 5; Trudie Hill, District 1; and Roy Reeves, District 4.

DISTRICT 5

Patricia Anderson, Vice Chairman
Doerun, GA 31744
E-mail: candypat@windstream.net
Phone: (229) 941-5531

Anderson, a retired Colquitt County teacher, took office in January 2011.

DISTRICT 6

Kevin Sumner
242 Jonathan Road; Moultrie, GA 31788

E-mail: ksumner@colquitt.k12.ga.us
Phone: 229- 985-6418

Sumner, a registered nurse with Colquitt Regional Medical Center took office in January 2013.

Administrators

Samuel A. DePaul was named school superintendent in 2012. Mickey Key, Fritzie Sheumaker, and Todd Cason serve as assistant superintendents. They supervise a school system of 14 schools and approximately 9,500 students with a budget of \$100 million.



Invitations & Stationery

by

- Pepperlite • Oddballs • IttyBitty
- Inviting Co • Picture Perfect

CRANFORD
JEWELERS
Since 1933

*Come See Mary Ann,
Bo, Celena or Janice*

108 South Main Street
Moultrie, GA
985-6521

817446



The **Prescription Shoppe** 

203 - 31st Ave., S.E. • Moultrie
(Across from Hospital)
229-985-9296
24-Hour Refill Line - 985-2698
Mon. - Fri. 9:00 a.m. - 6:00 p.m.
Saturday 9:00 a.m. - 1:00 p.m.



Westside Pharmacy 

720 W. Central Ave. • Moultrie
(Next to Oxley's)
229-890-6054
24-Hour Refill Line - 985-2698
Mon. - Fri. 9:00 a.m. - 6:00 p.m.
Saturday 9:00 a.m. - 1:00 p.m.

109818



ABRAHAM BALDWIN AGRICULTURAL COLLEGE

Tifton, Ga.

With a multitude of degree programs ranging from bachelor's degrees to transfer programs, ABAC has something for everyone. Each major provides valuable

hands-on learning experiences that can't always be taught in a classroom. You can also get involved on campus in one of 50 clubs and organizations, intercollegiate sports and much more.

Becoming an ABAC Stallion is a point of pride for our students and applying today brings you one step closer. See for yourself that ABAC is College Done Right!

Visit www.abac.edu/admissions for more information.

www.abac.edu

229.391.5004

817211



11 - 8TH AVENUE, N.E.



818 WEST CENTRAL AVE.



501 VETERANS PARKWAY SOUTH

3 Moultrie Locations to Serve You!

Hometown Proud

Family Owned and Operated

Since 1940

816643

August 2013

Compliments of *The Moultrie Observer*

SUNDAY	MONDAY	TUESDAY	WEDNESDAY	THURSDAY	FRIDAY	SATURDAY
				1	2	3 National Night Out, 11 a.m.-1 p.m., Jim Buck Goff Sports Complex.
4	5 Open House at all schools but the Achievement Center (See the schedule on the back page of the calendar).	6	7 FIRST DAY OF SCHOOL	8 Teachers report to work. Varsity softball vs. Fitzgerald, in Fitzgerald, 4 p.m.	9 Georgia Tax Free Holiday.	10 Georgia Tax Free Holiday. Packers scrimmage at Norcross, 6 p.m.
11	12 Achievement Center Open House. BOE work session at Stringfellow, 5 p.m.	13	14	15	16	17
18	19	20	21	22	23 Varsity softball, Buccaneer Bash, in Harrison and Alatoona, through Aug. 24.	24 Corky Kell Classic vs. Grayson H.S. at Georgia Dome, 2:30 p.m.
25	26 BOE regular meeting, 7 p.m.	27 Varsity softball vs. Lowndes, at Lowndes, 4 p.m.	28	29	30	31 Packers vs. Hoover H.S. at Hoover, Ala., 10 p.m.



every bead tells a story...

TROLLBEADS
THE ORIGINAL SINCE 1976

CRANFORD
JEWELERS
Since 1933

*Come See Mary Ann,
Bo, Celena or Janice*

108 South Main Street
Moultrie, GA
985-6521



The **Prescription Shoppe**

203 - 31st Ave., S.E. • Moultrie
(Across from Hospital)
229-985-9296
24-Hour Refill Line - 985-2698
Mon. - Fri. 9:00 a.m. - 6:00 p.m.
Saturday 9:00 a.m. - 1:00 p.m.



Westside Pharmacy

720 W. Central Ave. • Moultrie
(Next to Oxley's)
229-890-6054
24-Hour Refill Line - 985-2698
Mon. - Fri. 9:00 a.m. - 6:00 p.m.
Saturday 9:00 a.m. - 1:00 p.m.

009878

DIAMONDS...

ALL SHAPES AND SIZES
COMPLETE CUSTOM JEWELRY SERVICE.
WE WILL CUSTOM DESIGN
ANY JEWELRY ITEM.



Every year, we travel nearly 10,000 miles to hand select diamonds in Antwerp for our customers. With our connections overseas, we are able to cut out the middleman, and save money in the process. With this elite service, we extend the savings to our customers, and are able to get the best selection of diamonds in the world. Antwerp, Belgium is where 60%-80% of the world's diamonds are cut and traded, and is known as the "Diamond Capital of the World." We proudly comply to the Kimberly Process, which prevents conflict diamonds from entering the diamond trade, and by doing so, we are able to import conflict-free diamonds into the United States.

GRINER JEWELRY CO.

#1 JEWELRY STORE

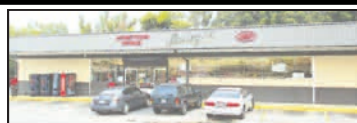


30-1st Avenue, SE • On The Square • Moultrie, Georgia
229-985-3700 • www.grinerjewelryco.com

817686



11 - 8TH AVENUE, N.E.



818 WEST CENTRAL AVE.



501 VETERANS PARKWAY SOUTH

3 Moultrie Locations to Serve You!

Hometown Proud

Family Owned and Operated

Since 1940

816644

September 2013

Compliments of *The Moultrie Observer*

SUNDAY	MONDAY	TUESDAY	WEDNESDAY	THURSDAY	FRIDAY	SATURDAY
1	2	3	4	5	6	7
LABOR DAY HOLIDAY					Packers vs. Lovejoy (Home), 8 p.m.	
8	9	10	11	12	13	14
	Graduation tests through Sept. 13. Progress reports.	Varsity softball vs. Valdosta (Home), 4 p.m.			CCHS Homecoming. Packers vs. Carver of Columbus (Home), 8 p.m. Varsity softball, Lowndes Tournament, at Lowndes, through Sept. 14.	
15	16	17	18	19	20	21
		Varsity softball vs. Tift (Home), 4 p.m.				Varsity softball vs. Brunswick, in Brunswick, noon.
22	23	24	25	26	27	28
	BOE regular meeting, 7 p.m.		Ga. high school writing test.	Varsity softball vs. Coffee, at Coffee, 4 p.m.	Packers vs. Lowndes Co., at Lowndes, 8 p.m.	
29	30					



Firenze
by
Juliska

CRANFORD
JEWELERS
Since 1933

*Come See Mary Ann,
Bo, Celena or Janice*

108 South Main Street
Moultrie, GA
985-6521



The **Prescription Shoppe** 

203 - 31st Ave., S.E. • Moultrie
(Across from Hospital)
229-985-9296
24-Hour Refill Line - 985-2698
Mon. - Fri. 9:00 a.m. - 6:00 p.m.
Saturday 9:00 a.m. - 1:00 p.m.



Westside Pharmacy 

720 W. Central Ave. • Moultrie
(Next to Oxley's)
229-890-6054
24-Hour Refill Line - 985-2698
Mon. - Fri. 9:00 a.m. - 6:00 p.m.
Saturday 9:00 a.m. - 1:00 p.m.

665818



Westside Pharmacy

720 West Central Ave. • Moultrie Georgia
(229)890-6054
24 Hour Refill Line: (229) 985-2698
Hours: M-F 9:AM to 6:PM • Saturday 9:AM to 1:PM



The Prescription Shop

203 - 31st Ave. SE • Moultrie Georgia
(229)985-9296
24 Hour Refill Line: (229)985-2698
Hours: M-F 9:AM to 6:PM • Saturday 9:AM to 1:PM

Convenient Care
207 31st Ave SE
Moultrie, Georgia 31768

(229) 217-0088
(229) 217-0086 (fax)

Always Accepting New Patients!
Walk-Ins Welcome!

We treat all types of illnesses and minor injuries and office visits start as low as \$50.

Monday - Friday 9:AM - 5:PM
Saturday 9:AM to 1:PM

818624



11 - 8TH AVENUE, N.E.



818 WEST CENTRAL AVE.



501 VETERANS PARKWAY SOUTH

3 Moultrie Locations to Serve You!

Hometown Proud

Family Owned and Operated

Since 1940

816645

October 2013

Compliments of **The Moultrie Observer**

SUNDAY	MONDAY	TUESDAY	WEDNESDAY	THURSDAY	FRIDAY	SATURDAY
		1 Varsity softball vs. Lee Co., in Leesburg, 5 p.m.	2	3 Varsity softball vs. Crisp Co. (Home), 4 p.m.	4 Packers vs. Tift County (Home), 7:30 p.m.	5
6	7	8	9	10	11	12
13	14	15	16 PSAT (Grade 10). Early release (PreK-5th).	17	18 Packers vs. Brunswick (Home), 7:30 p.m.	19
20	21 Report cards.	22	23	24	25 Packers vs. Valdosta (Home), 7:30 p.m. (Senior Night)	26
27 ITBS (Grades 3, 5 and 8) through Nov. 1.	28	29	30	31	FALL BREAK	



arthur court
*Your purchase supports enviornmental & wildlife preservation.

CRANFORD
JEWELERS
Since 1933

*Come See Mary Ann,
Bo, Celena or Janice*

108 South Main Street
Moultrie, GA
985-6521



The **Prescription Shoppe** 

203 - 31st Ave., S.E. • Moultrie
(Across from Hospital)
229-985-9296
24-Hour Refill Line - 985-2698
Mon. - Fri. 9:00 a.m. - 6:00 p.m.
Saturday 9:00 a.m. - 1:00 p.m.



Westside Pharmacy 

720 W. Central Ave. • Moultrie
(Next to Oxley's)
229-890-6054
24-Hour Refill Line - 985-2698
Mon. - Fri. 9:00 a.m. - 6:00 p.m.
Saturday 9:00 a.m. - 1:00 p.m.

Elementary Schools

Cox Elementary

1003 12 St. S.E., Moultrie
890-6124
<http://colquitt.ces.schooldesk.net/>
FOUNDED: 1957
NUMBER OF STUDENTS: 520 in pre-kindergarten through fifth grade.
PRINCIPAL: Jim Horne
ASSISTANT PRINCIPAL: Teresa Willis
COUNSELOR: Kimberley Guion.
HONORS: Cox Elementary has been accredited by the Southern Association of Colleges and Schools (SACS) since the accreditation process was begun.

Doerun Elementary

P.O. Box 188, Doerun
782-5276
<http://colquitt.des.schooldesk.net/>
FOUNDED: 1894
NUMBER OF STUDENTS: 310 in pre-kindergarten through fifth grade.
PRINCIPAL: Chuck Jones.
INSTRUCTIONAL SUPPORT SPECIALIST: Terri Carr (1/2 time).
COUNSELOR: Le Lang.
HONORS: Doerun Elementary has been accredited since the Southern Association of Colleges and Schools accreditation process was begun.

Funston Elementary

137 N. Academy St., Funston
941-2626
<http://colquitt.fes.schooldesk.net/>
FOUNDED: Established 1919.
NUMBER OF STUDENTS: 429 in pre-kindergarten through fifth grade.
PRINCIPAL: Ricky Reynolds.
INSTRUCTIONAL SUPPORT SPECIALIST: Robin Calhoun
COUNSELOR: Susan Herndon.
HONORS: Funston has been accredited since the Southern Association of Colleges and Schools process was begun.



Submitted photo

HAMILTON MEDIA SPECIALIST WINS DISTRICT HONOR: Karen Gould, second from left, Hamilton Elementary School media specialist, was selected last fall by the Georgia Association of Instructional Technology (GAIT) and the Georgia Library Media Association (GLMA) as the Library Media Specialist of the Year for the Southwest Georgia District. Fellow Colquitt County media specialists joined Gould at the annual conference where she was recognized. From left are Susie Strange of R.B. Wright Elementary, Gould, and Melinda Wright and Cheryl Youse, both of Colquitt County High School.

Hamilton Elementary

5110 Ga. Hwy. 111, Hartsfield
941-5594
<http://colquitt.hes.schooldesk.net/>
FOUNDED: 1956.
NUMBER OF STUDENTS: 292 in pre-kindergarten through fifth.

PRINCIPAL: Krista Harrell.
INSTRUCTIONAL SUPPORT SPECIALIST: Terri Carr (1/2 time).
COUNSELOR: Le Lang.
HONORS: Hamilton Elementary has been accredited since the Southern Association of Colleges and Schools process was begun.

Oxley's
HOMETOWN PROUD 



11 - 8TH AVENUE, N.E.



818 WEST CENTRAL AVE.



501 VETERANS PARKWAY SOUTH

3 Moultrie Locations to Serve You!

Hometown Proud

Family Owned and Operated

Since 1940

Norman Park Elementary

P.O. Drawer B, Norman Park
769-3612

<http://colquitt.npes.schooldesk.net/>

FOUNDED: Established 1919.

NUMBER OF STUDENTS: 618 in pre-kindergarten through fifth grade.

PRINCIPAL: Keith Adams.

ASSISTANT PRINCIPAL: Michelle Daniels

COUNSELOR: Joan White.

HONORS: Norman Park Elementary has been accredited since the Southern Association of Colleges and Schools process began.

Odom Elementary

2902 Sardis Church Road, Moultrie
324-3313

<http://colquitt.odom.schooldesk.net/>

FOUNDED: 1986.

NUMBER OF STUDENTS: 643 in pre-kindergarten through fifth grade.

PRINCIPAL: Trish Lirio

ASSISTANT PRINCIPAL: Leamon Madison.

COUNSELOR: LeAnn Owens.

HONORS: Odom has been accredited by the Southern Association of Colleges and Schools since it was founded. Odom was recognized as a Title I Reward School for the 2011-2012 school year.

Okapilco Elementary

3300 Ga. Hwy. 33 North,
Moultrie
890-6191

<http://colquitt.oes.schooldesk.net/>

FOUNDED: 1927.

NUMBER OF STUDENTS: 516 in pre-kindergarten through fifth grade.

PRINCIPAL: Eric Croft.

INSTRUCTIONAL SUPPORT SPECIALIST: Sherry Jones

COUNSELOR: Amy Bennett.

HONORS: Okapilco has been accredited by SACS since the Southern Association of Colleges and Schools process began.

Stringfellow Elementary

200 Fifth Ave. S.W., Moultrie
890-6111

<http://colquitt.sfes.schooldesk.net/>

FOUNDED: 1904.

NUMBER OF STUDENTS: 389 in pre-kindergarten through fifth grade.

PRINCIPAL: Darlene Reynolds.

ASSISTANT PRINCIPAL: Josh Purvis.

COUNSELOR: Sandra Richardson.

HONORS: Stringfellow has been accredited by the Southern Association of Colleges and Schools since the process began.



Submitted photo

STUDENTS HELP THOSE IN NEED: Students and staff of J.M. Odom Elementary School raised more than \$900 in an effort to show support for the families who suffered tremendously during the tornado in Oklahoma in May. This two-day fundraising event was sponsored by the J.M. Odom Beta Club and all money raised will be donated to the American Red Cross.

Sunset Elementary

698 U.S. Hwy. 319 South,
Moultrie

890-6184

<http://colquitt.ses.schooldesk.net/>

FOUNDED: 1902.

NUMBER OF STUDENTS: 727 in pre-kindergarten through fifth grade.

PRINCIPAL: Bruce Owen.

ASSISTANT PRINCIPAL: Charla Brinson

COUNSELOR: Arden Folsom.

HONORS: Sunset Elementary has been accredited since the Southern Association of Colleges and Schools process began.

R.B. Wright Elementary

1812 Second St. S.E., Moultrie

890-6186

<http://colquitt.wes.schooldesk.net/>

FOUNDED: 1958.

NUMBER OF STUDENTS: 615 in pre-kindergarten through fifth grade.

PRINCIPAL: Marc Bell.

ASSISTANT PRINCIPAL: Summer Hall.

COUNSELOR: Gabby Ramirez.

HONORS: Wright Elementary has been accredited since the Southern Association of Colleges and Schools process began.



CRANFORD
JEWELERS
Since 1933

*Come See Mary Ann,
Bo, Celena or Janice*

108 South Main Street
Moultrie, GA
985-6521

817221



The **Prescription Shoppe** 


203 - 31st Ave., S.E. • Moultrie
(Across from Hospital)
229-985-9296
24-Hour Refill Line - 985-2698
Mon. - Fri. 9:00 a.m. - 6:00 p.m.
Saturday 9:00 a.m. - 1:00 p.m.



Westside Pharmacy 

720 W. Central Ave. • Moultrie
(Next to Oxley's)
229-890-6054
24-Hour Refill Line - 985-2698
Mon. - Fri. 9:00 a.m. - 6:00 p.m.
Saturday 9:00 a.m. - 1:00 p.m.

865818



velvet
BY GRAHAM & SPENCER

Since 1951
the difference in dressed and well-dressed...

Turner's
- ladies' fine clothier -

104 South Main Street • Moultrie, GA • 985-3344



KEN APPERSON

PECANS

Paying Top Dollar For Quality Pecans!

FAST, FRIENDLY SERVICE

We Crack Pecans

FRESH, SHELLLED PECANS AVAILABLE!

3 LOCATIONS:

502 North Main St.	105 Main St.	1002 South 7th St.
Moultrie, GA	Smithville, GA	Cordele, GA
229-873-1498	229-846-2949	229-273-2616

816662



Oxley's
HOMETOWN PROUD 

11 - 8TH AVENUE, N.E.

818 WEST CENTRAL AVE.

501 VETERANS PARKWAY SOUTH

3 Moultrie Locations to Serve You!

Hometown Proud
Family Owned and Operated
Since 1940

816647

November 2013

Compliments of **The Moultrie Observer**

SUNDAY	MONDAY	TUESDAY	WEDNESDAY	THURSDAY	FRIDAY	SATURDAY
					1	2
					Packers vs. Coffee Co., in Douglas, 8 p.m.	
3	4	5	6	7	8	9
					Packers vs. Camden Co., in Kingsland, 7:30 p.m.	
10	11	12	13	14	15	16
	Ga. high school graduation tests through Nov. 15.		Progress reports.			
17	18	19	20	21	22	23
	BOE regular meeting, 7 p.m.					
24	25	26	27	28	29	30
			Lights! Lights! downtown.			
THANKSGIVING HOLIDAYS						



WOODLAND by
Spode

CRANFORD
JEWELERS
Since 1933

*Come See Mary Ann,
Bo, Celena or Janice*

108 South Main Street
Moultrie, GA
985-6521



The **Prescription Shoppe**

203 - 31st Ave., S.E. • Moultrie
(Across from Hospital)
229-985-9296
24-Hour Refill Line - 985-2698
Mon. - Fri. 9:00 a.m. - 6:00 p.m.
Saturday 9:00 a.m. - 1:00 p.m.



Westside Pharmacy

720 W. Central Ave. • Moultrie
(Next to Oxley's)
229-890-6054
24-Hour Refill Line - 985-2698
Mon. - Fri. 9:00 a.m. - 6:00 p.m.
Saturday 9:00 a.m. - 1:00 p.m.

765818

The Museum of Colquitt County History



Bring the Kids!



Bring your Camera!



Santa Visits the Museum
Sunday Dec. 8 from - 2-5 p.m.



“The Home of Colquitt County’s History”

Friday & Saturday 10:00 a.m. until 5:00 p.m. Sunday 2:00 until 5:00 p.m.

Tours for Are Available During The Week By Appointment.
Teachers bring your students for a living history experience.

500 4th Ave. S.E. | Moultrie

www.colquittmuseum.org

229.890.1626

817603

Oxley's
HOMETOWN PROUD IGA



11 - 8TH AVENUE, N.E.



818 WEST CENTRAL AVE.



501 VETERANS PARKWAY SOUTH

3 Moultrie Locations to Serve You!

Hometown Proud

Family Owned and Operated

Since 1940

816648

December 2013

Compliments of *The Moultrie Observer*

SUNDAY	MONDAY	TUESDAY	WEDNESDAY	THURSDAY	FRIDAY	SATURDAY
1	2	3	4	5	6	7
8	9	10	11	12	13	14
Santa at the Museum of Colquitt County History, 2-5 p.m.	End of course testing through Dec. 13.					
15	16	17	18	19	20	21
	BOE regular meeting, 7 p.m.				STUDENTS OFF TEACHERS REPORT	
22	23	24	25	26	27	28
	CHRISTMAS BREAK					
29	30	31				
	CHRISTMAS BREAK					



Simply Christmas
by
M. Bagwell

CRANFORD
JEWELERS
Since 1933

*Come See Mary Ann,
Bo, Celena or Janice*

108 South Main Street
Moultrie, GA
985-6521



The **Prescription Shoppe** 

203 - 31st Ave., S.E. • Moultrie
(Across from Hospital)
229-985-9296
24-Hour Refill Line - 985-2698
Mon. - Fri. 9:00 a.m. - 6:00 p.m.
Saturday 9:00 a.m. - 1:00 p.m.



Westside Pharmacy 

720 W. Central Ave. • Moultrie
(Next to Oxley's)
229-890-6054
24-Hour Refill Line - 985-2698
Mon. - Fri. 9:00 a.m. - 6:00 p.m.
Saturday 9:00 a.m. - 1:00 p.m.

965818



229.985.4444
Moultrie, Ga
www.jcicontractors.com

JCI has continually served the Colquitt County Board of Education for over 19 years and is committed to providing the highest level of service as the Construction Manager for the New Colquitt County High School Campus.



819101

Construction Management - Design Build - General Contracting

The Power of Community, Committed to You.

At Ameris Bank, our customers and the community are always at the center of everything we do. From big-ticket decisions to everyday services, we're committed to serving the citizens of our community and supporting Moultrie area schools.

Welcome Back to School!



amerisbank.com

Moultrie Location
225 South Main | 229.985.2222

Quitman Hwy. Location
1707 First Ave. SE | 229.985.1111

Sunset Location
2513 South Main | 229.873.4444

Doerun Location
137 West Broad Ave. | 229.782.5358



818621



11 - 8TH AVENUE, N.E.



818 WEST CENTRAL AVE.



501 VETERANS PARKWAY SOUTH

3 Moultrie Locations to Serve You!

Hometown Proud

Family Owned and Operated

Since 1940

816649

January 2014

Compliments of *The Moultrie Observer*

SUNDAY	MONDAY	TUESDAY	WEDNESDAY	THURSDAY	FRIDAY	SATURDAY
			1	2	3	4
			CHRISTMAS BREAK			
5	6	7	8	9	10	11
	STUDENTS OFF TEACHERS REPORT			Report cards.		
12	13	14	15	16	17	18
19	20	21	22	23	24	25
	MLK DAY HOLIDAY		Writing test (8th grade)			
26	27	28	29	30	31	



Bridal Registry Available...

CRANFORD
JEWELERS
Since 1933

*Come See Mary Ann,
Bo, Celena or Janice*

108 South Main Street
Moultrie, GA
985-6521

817234



The Prescription
Shoppe 

203 - 31st Ave., S.E. • Moultrie
(Across from Hospital)
229-985-9296
24-Hour Refill Line - 985-2698
Mon. - Fri. 9:00 a.m. - 6:00 p.m.
Saturday 9:00 a.m. - 1:00 p.m.



Westside Pharmacy 

720 W. Central Ave. • Moultrie
(Next to Oxley's)
229-890-6054
24-Hour Refill Line - 985-2698
Mon. - Fri. 9:00 a.m. - 6:00 p.m.
Saturday 9:00 a.m. - 1:00 p.m.

818604

CAKES • CAKES • CAKES



• Birthday • Wedding • 10 Layer Chocolate • Red Velvet • Italian Cream • Coconut

COOKIES

Sugar • Snicker Doodle • Peanut Butter • Chocolate Chip • Oatmeal Raisin • White Chocolate Macadamia

BROWNIES • CUPCAKES • MUFFINS • PETITE FOURS



Handspun Milk Shakes
• Vanilla • Chocolate • Strawberry

Hours: Closed Sunday & Monday; Tuesday-Friday 7:00-5:00 Saturday 8:30-4:30

134 - 1st Street SE • Moultrie • 668-2253

We make everyday a special occasion!

816640



11 - 8TH AVENUE, N.E.



818 WEST CENTRAL AVE.



501 VETERANS PARKWAY SOUTH

3 Moultrie Locations to Serve You!

Hometown Proud

Family Owned and Operated

Since 1940

816650



Submitted photo
The 8th grade FFA Chapter at C.A. Gray Junior High School installed American flags in the school's classrooms. The flags were donated by the administration and the students provided the labor. Pictured are Faith Hall, Griffin Simmons, Trinity Summerlin, and Jacob Sixkiller.



Submitted photo
Eight seventh graders in the Willie J. Williams Middle School band participated in a solo evaluation event at Darton State University April 20, earning six Superior and two Excellent ratings. The participating students were Selena Meza, Abriana Stancil, Myckinzie Cobb, Naiomi Valdez, Brenda Hernandez, Eli Massey, Brandon Yates and Vivian Vo.



Submitted photo
Officials at the Southeastern Community Blood Bank called last year's Colquitt County High School blood drive 'phenomenal' after it collected 238 blood donations — 197 of them from first-time donors. 'Since one whole blood donation can be separated into red cells, platelets and plasma, over 700 patients may have benefited by their vital sharing of their gift of life,' said a press release from SCBC. Shown are co-chairs June Woods and Molly Jacobs with three students who gave blood.

W.J. Williams Middle School

950 4th Street S.W., Moultrie
890-6183
<http://colquitt.wms.schooldesk.net/>
FOUNDED: School building constructed as an addition to Moultrie High School in 1954. Became WJWMS in 1995 when the ninth grade moved to Colquitt County High School.
NUMBER OF STUDENTS: 1,368 in grades 6-7.
PRINCIPAL: Doug Howell.
ASSISTANT PRINCIPALS: Treasea Bridges, Clark Harden, and Leanne NeSmith.
COUNSELORS: Kathy Harrell, Stacey Ivey, and Marsha Watson.
HONORS: Williams Middle School has been accredited by the Southern Association of Colleges and Schools since the process was begun.

C.A. Gray Junior High

812 11th Ave. N.W., Moultrie
890-6189
<http://colquitt.gjhs.schooldesk.net/>
FOUNDED: 1956.
NUMBER OF STUDENTS: 1,255 in grades 8-9.
PRINCIPAL: Dr. Thelma Jackson.
ASSISTANT PRINCIPALS: Darius Dawson, Sheila Smith, and Sharon Veasey.
COUNSELORS: Pam Heidelberg, Le Lang, and Debra Lightsey.
HONORS: C.A. Gray has been accredited since the Southern Association of Colleges and Schools process was begun.

Colquitt County Achievement Center

1800 Park Ave., Moultrie
890-6197
<http://colquitt.achieve.schooldesk.net/>
NUMBER OF STUDENTS: 126 in grades 6-12
PRINCIPAL: T.B.A.
HONORS: Colquitt County Achievement Center has been accredited by the Southern Associations of Colleges and Schools since the school was founded.

Colquitt County High School

1800 Park Ave., Moultrie
890-6181
<http://colquitt.high.schooldesk.net/>
FOUNDED: CCHS was built in 1978 and consolidated Doerun, Norman Park and Moultrie high schools.
NUMBER OF STUDENTS: 1648 in grades 10-12.
PRINCIPAL: Stephanie Terrell.
ASSISTANT PRINCIPALS: Marlon Baker, Darrell Funderburk, Kevin Giddens, Todd Hall, and Marni Kirkland.
COUNSELORS: Monica Crenshaw, Keith Hall, Donna Mitchell, Cathy Nobles, and Suzanne Tolbert (Graduation Coach).
HONORS: CCHS has been accredited by the Southern Associations of Colleges and Schools since the school was founded.



Ephesians 6:10-18

CRANFORD
JEWELERS
Since 1933

*Come See Mary Ann,
Bo, Celena or Janice*

108 South Main Street
Moultrie, GA
985-6521

817448



SALA NEWSOME,
R. Ph.

The Prescription
Shoppe 

203 - 31st Ave., S.E. • Moultrie
(Across from Hospital)
229-985-9296
24-Hour Refill Line - 985-2698
Mon. - Fri. 9:00 a.m. - 6:00 p.m.
Saturday 9:00 a.m. - 1:00 p.m.



GREG YARBROUGH,
R. Ph.

Westside 
Pharmacy

720 W. Central Ave. • Moultrie
(Next to Oxley's)
229-890-6054
24-Hour Refill Line - 985-2698
Mon. - Fri. 9:00 a.m. - 6:00 p.m.
Saturday 9:00 a.m. - 1:00 p.m.

818594

INVEST IN YOUR FUTURE @



MTC

Moultrie Technical College

2013-14 SEMESTER DATES
Fall Classes begin August 21
Spring Classes begin January 6
Summer Classes begin May 19

Everywhere You Turn!

Equal Opportunity Institution

www.moultrietech.edu

FIND MOULTRIE TECH ON YOUR FAVORITE SOCIAL MEDIA!



818965

Oxley's
HOMETOWN PROUD 



11 - 8TH AVENUE, N.E.



818 WEST CENTRAL AVE.



501 VETERANS PARKWAY SOUTH

3 Moultrie Locations to Serve You!

Hometown Proud
Family Owned and Operated
Since 1940

816651

February 2014

Compliments of *The Moultrie Observer*

SUNDAY	MONDAY	TUESDAY	WEDNESDAY	THURSDAY	FRIDAY	SATURDAY
						1
2	3	4	5	6	7	8
9	10	11	12	13	14	15
	Progress reports.				WINTER BREAK	
16	17	18	19	20	21	22
	WINTER BREAK					
23	24	25	26	27	28	
			Ga. High School Writing Test.			

LOVE
in full bloom



STERLING
SILVER
DIAMOND
RING



STERLING
SILVER
DIAMOND
PENDANT



DIAMOND
RING

CRANFORD
JEWELERS
Since 1933

*Come See Mary Ann,
Bo, Celena or Janice*

108 South Main Street
Moultrie, GA
985-6521

817252



The **Prescription Shoppe** 

203 - 31st Ave., S.E. • Moultrie
(Across from Hospital)
229-985-9296
24-Hour Refill Line - 985-2698
Mon. - Fri. 9:00 a.m. - 6:00 p.m.
Saturday 9:00 a.m. - 1:00 p.m.



Westside Pharmacy 

720 W. Central Ave. • Moultrie
(Next to Oxley's)
229-890-6054
24-Hour Refill Line - 985-2698
Mon. - Fri. 9:00 a.m. - 6:00 p.m.
Saturday 9:00 a.m. - 1:00 p.m.

818592

Alfred Aguero, D.M.D., P.C.

4 Magnolia CT
Moultrie, GA 31768
Phone: 229-985-6499



818629

Are Dental Implants right for you?

Do you have...

Loose fitting dentures? Unsightly Partials? Missing teeth?

Thankfully, its an easy fix. Dental implants offer a strong secure solution to missing teeth. They can replace a single tooth, several teeth or even secure a loose partial or denture. With over 25 years of experience in Implant Dentistry, Dr. Aguero can offer an affordable solution for you. So please call 229-985-6499 for a free implant consultation today.



11 - 8TH AVENUE, N.E.



818 WEST CENTRAL AVE.



501 VETERANS PARKWAY SOUTH

3 Moultrie Locations to Serve You!

Hometown Proud

Family Owned and Operated

Since 1940

816652

March 2014

Compliments of *The Moultrie Observer*

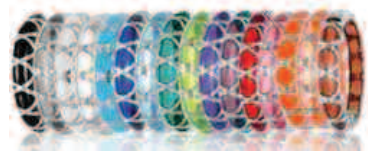
SUNDAY	MONDAY	TUESDAY	WEDNESDAY	THURSDAY	FRIDAY	SATURDAY
						1
2	3	4	5	6	7	8
9	10	11	12	13	14	15
16	17	18	19	20	21	22
23	24	25	26	27	28	29
30	31					
	SPRING BREAK					

Writing test (5th grade)

Grade 3 writing evaluations through March 28.

Report cards.

Ga. High School Graduation Tests through March 28.



CRANFORD
JEWELERS
Since 1933

*Come See Mary Ann,
Bo, Celena or Janice*

108 South Main Street
Moultrie, GA
985-6521



SALA NEWSOME,
R. Ph.

The **Prescription
Shoppe** 

203 - 31st Ave., S.E. • Moultrie
(Across from Hospital)
229-985-9296
24-Hour Refill Line - 985-2698
Mon. - Fri. 9:00 a.m. - 6:00 p.m.
Saturday 9:00 a.m. - 1:00 p.m.



GREG YARBROUGH,
R. Ph.

**Westside
Pharmacy** 

720 W. Central Ave. • Moultrie
(Next to Oxley's)
229-890-6054
24-Hour Refill Line - 985-2698
Mon. - Fri. 9:00 a.m. - 6:00 p.m.
Saturday 9:00 a.m. - 1:00 p.m.

165818

eXmark

**EVERY LAZER Z® COMES
WITH A GREAT WARRANTY.
EVEN IF IT'S UNLIKELY YOU'LL USE IT.**



LAZER Z® One serious
mower for serious pros.
Demo one and see why it's
the machine preferred over
any other.
Visit us at exmark.com

**ZERO-TURN RIDERS
AS LOW AS**

**\$61 PER
MO.**

3.99% for 60 months based on QTE651KA421

0%

**FINANCING
GOING ON NOW**

On all mowers. Limited time offer.
See dealer for complete details.

**XTREME PERFORMANCE
FOR EVERY JOB**



**NEW!
2013 RANGER XP® 900**

Shown with optional accessories

- HARDEST WORKING, SMOOTHEST RIDING FEATURES**
- NEW! 60 HP Prostar™ 900 engine with class-leading torque**
- NEW! Longer Chassis With More Suspension For A Smooth Ride**
- NEW! Revolutionsry Lock & Ride® PRO-FIT™ cab system**

 **POLARIS®**

Warning: The Polaris RANGER and RZR are not intended for on-road use. Driver must be at least 16 years old with a valid driver's license to operate. Passengers must be at least 12 years old and tall enough to grasp the hand holds and plant feet firmly on the floor. All SxS drivers should take a safety training course. Contact ROHVA at www.rohva.org or (949) 255-2560 for additional information. Drivers and passengers should always wear helmets, eye protection, protective clothing, and seat belts. Always use cab nets. Be particularly careful on difficult terrain. Never drive on public roads or paved surfaces. Never engage in stunt driving, and avoid excessive speeds and sharp turns. Riding and alcohol/drugs don't mix. Check local laws before riding on trails. ©2012 Polaris Industries Inc.

DEMOTT TRACTOR CO., INC.

1659 SYVESTER HWY. • MOULTRIE, GA 31768

229-985-5006

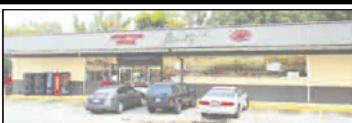
www.demotttractor.com

819569

Oxley's
HOMETOWN PROUD 



11 - 8TH AVENUE, N.E.



818 WEST CENTRAL AVE.



501 VETERANS PARKWAY SOUTH

3 Moultrie Locations to Serve You!

Hometown Proud

Family Owned and Operated

Since 1940

816653

April 2014

Compliments of **The Moultrie Observer**

SUNDAY	MONDAY	TUESDAY	WEDNESDAY	THURSDAY	FRIDAY	SATURDAY	
		1	2	3	4	5	
		SPRING BREAK					
6	7	8	9	10	11	12	
13	14	15	16	17	18	19	
	CRCT (grades 3-8) through April 18.						
20	21	22	23	24	25	26	
			Progress reports.				
27	28	29	30				



Juliska

CRANFORD
JEWELERS
Since 1933

*Come See Mary Ann,
Bo, Celena or Janice*

108 South Main Street
Moultrie, GA
985-6521



The **Prescription Shoppe** 

203 - 31st Ave., S.E. • Moultrie
(Across from Hospital)
229-985-9296
24-Hour Refill Line - 985-2698
Mon. - Fri. 9:00 a.m. - 6:00 p.m.
Saturday 9:00 a.m. - 1:00 p.m.



Westside Pharmacy 

720 W. Central Ave. • Moultrie
(Next to Oxley's)
229-890-6054
24-Hour Refill Line - 985-2698
Mon. - Fri. 9:00 a.m. - 6:00 p.m.
Saturday 9:00 a.m. - 1:00 p.m.

06593B



Something Different

OF MOULTRIE
Come Join Us For Lunch & Dinner

*We are carrying on the family tradition of American-owned & operated!
We appreciated your support and patronage!*

229-985-4159
www.dairyqueen.com
2616 First Avenue, S.E. Moultrie, GA



818623



SCHOOL'S OUT FOR SUMMER!

FOR YOUTH DEVELOPMENT®
FOR HEALTHY LIVING
FOR SOCIAL RESPONSIBILITY

What will your child do this summer?
The Moultrie YMCA offers Summer Day Camp for children ages 4 - 12!

YMCA Summer Day Camp is a place for your child to make new friends, grow, play and create new memories that last a lifetime. Weekly themes and field trips highlight each week!

For more information, contact Kristen Brogdon, PRIMETIME Director at the Moultrie YMCA.



Moultrie YMCA

601 26th Ave SE Moultrie, GA 31768

229-985-1154

www.moultrieymca.org

818618



11 - 8TH AVENUE, N.E.



818 WEST CENTRAL AVE.



501 VETERANS PARKWAY SOUTH

3 Moultrie Locations to Serve You!

Hometown Proud

Family Owned and Operated

Since 1940

816654

May 2014

Compliments of *The Moultrie Observer*

SUNDAY	MONDAY	TUESDAY	WEDNESDAY	THURSDAY	FRIDAY	SATURDAY
				1	2	3
4	5 <small>AP testing through May 16. End-of-course testing through May 16.</small>	6	7	8	9	10
11	12 <small>School Nutrition banquet at C.A. Gray.</small>	13	14 <small>CRCT retake (reading and math) (grades 3-8) through May 15.</small>	15	16	17
18	19	20	21	22 <small>Report cards (elementary and middle schools). LAST DAY OF SCHOOL</small>	23 <small>STUDENTS OFF TEACHERS REPORT</small>	24 <small>Graduation.</small>
25	26	27	28 <small>Report cards (CCHS).</small>	29	30	31



Class of 2014...
Congratulations!

CRANFORD
JEWELERS
Since 1933

*Come See Mary Ann,
Bo, Celena or Janice*

108 South Main Street
Moultrie, GA
985-6521



The **Prescription Shoppe** 

203 - 31st Ave., S.E. • Moultrie
(Across from Hospital)
229-985-9296
24-Hour Refill Line - 985-2698
Mon. - Fri. 9:00 a.m. - 6:00 p.m.
Saturday 9:00 a.m. - 1:00 p.m.



Westside Pharmacy 

720 W. Central Ave. • Moultrie
(Next to Oxley's)
229-890-6054
24-Hour Refill Line - 985-2698
Mon. - Fri. 9:00 a.m. - 6:00 p.m.
Saturday 9:00 a.m. - 1:00 p.m.

685818

KIDS CARE

AFTER HOURS PEDIATRIC CLINIC



Kids Care has a physician on duty who will also be available to provide sports physicals this summer.
- No appointment necessary -

Mon-Thur, 6-9 p.m. | Conveniently located
MED+ CARE CLINIC | next to Wal-Mart.

PACKERS

KIDS CARE
AFTER HOURS PEDIATRIC CLINIC
229-890-7009

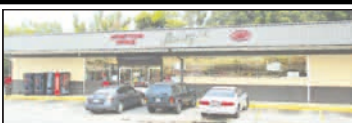
Med+Care
URGENT CARE CLINIC
At Colquitt Regional Medical Center
www.colquittregional.com

819732

Oxley's
HOMETOWN PROUD 



11 - 8TH AVENUE, N.E.



818 WEST CENTRAL AVE.



501 VETERANS PARKWAY SOUTH

3 Moultrie Locations to Serve You!

Hometown Proud

Family Owned and Operated

Since 1940

816655

June 2014

Compliments of **The Moultrie Observer**

SUNDAY	MONDAY	TUESDAY	WEDNESDAY	THURSDAY	FRIDAY	SATURDAY
1	2	3	4	5	6	7
8	9	10	11	12	13	14
15	16	17	18	19	20	21
22	23	24	25	26	27	28
29	30					

Report cards (junior high).

End-of-course testing through June 27.



the sea
by

MARIPOSA
Our World is Still Made by Hand®

CRANFORD
JEWELERS
Since 1933

*Come See Mary Ann,
Bo, Celena or Janice*

108 South Main Street
Moultrie, GA
985-6521

817256



The **Prescription Shoppe** 

203 - 31st Ave., S.E. • Moultrie
(Across from Hospital)
229-985-9296
24-Hour Refill Line - 985-2698
Mon. - Fri. 9:00 a.m. - 6:00 p.m.
Saturday 9:00 a.m. - 1:00 p.m.



Westside Pharmacy 

720 W. Central Ave. • Moultrie
(Next to Oxley's)
229-890-6054
24-Hour Refill Line - 985-2698
Mon. - Fri. 9:00 a.m. - 6:00 p.m.
Saturday 9:00 a.m. - 1:00 p.m.



Kevin C. Hall/The Moultrie Observer
Jett Kiminas, center, of Colquitt County won the District 9 Spelling Bee Feb. 23, 2013, at C.A. Gray Junior High School. Eighteen students from across Southwest Georgia competed for the chance to advance to the state competition. Kaminas and runner-up Davia Allen, right, of Early County both competed at the state level. Third-place finisher Michael Jones Jr., left, of Clay County, served as an alternate in case either of them couldn't make it.

APPERSON PROPERTIES, INC.

- BUY
- RENT
- SELL • TRADE

Owner Financing
WITH DOWN PAYMENT

NO CREDIT CHECK

Residential & Commercial

**502 North Main Street
Moultrie, GA**

CALL TODAY!

229-873-1498

Oxley's
HOMETOWN PROUD 



11 - 8TH AVENUE, N.E.



818 WEST CENTRAL AVE.



501 VETERANS PARKWAY SOUTH

3 Moultrie Locations to Serve You!

Hometown Proud

Family Owned and Operated

Since 1940

816656

July 2014

Compliments of *The Moultrie Observer*

SUNDAY	MONDAY	TUESDAY	WEDNESDAY	THURSDAY	FRIDAY	SATURDAY
		1	2	3	4	5
6	7	8	9	10	11	12
13	14	15	16	17	18	19
	<small>Ga. High School Graduation Tests through July 18.</small>		<small>Ga. High School Writing Test.</small>			
20	21	22	23	24	25	26
27	28	29	30	31		



elly preston
JEWELRY

CRANFORD
JEWELERS
Since 1933

*Come See Mary Ann,
Bo, Celena or Janice*

108 South Main Street
Moultrie, GA
985-6521



COLQUITT COUNTY SCHOOLS

PACKERS

PACKERS



2013-2014 CALENDAR OF EVENTS*

August 5 - Open House



PreK - 5th Grade ~ (All Elementary Schools) - 3:00pm - 5:30pm
 6th & 7th Grade ~ Willie J. Williams Middle School - 4:00pm - 6:00pm
 8th & 9th Grade ~ Charlie A. Gray Junior High School - 12:00pm - 6:00pm
 10th - 12th Grade ~ Colquitt County High School - 5:00pm - 7:00pm
 Gifted Center - 1:00pm - 6:00pm



August 7 - First Day of School

- | | |
|---|---|
| September 2 - Labor Day Holiday | January 20 - Martin Luther King, Jr. Holiday |
| September 13 - Packer Homecoming | February 14 - Student Holiday/Teacher Reduction Day |
| October 17-18 - Expo Holidays | February 17 - Presidents' Day Holiday |
| November 25-29 - Thanksgiving Holidays | March 31 - April 4 - Spring Break |
| December 20 - Student Holiday/Teacher Workday | May 22 - Last Day of School |
| December 23 - January 3 - Christmas Holidays | May 24 - Graduation |
| January 6 - Student Holiday/Teacher Workday | |



*This information was provided by the Colquitt County Board of Education.

NATALIE K	PANDORA	 MASTER JEWELER BRILLIANCE YOU DESERVE™	 Griner JEWELRY			
30-1 st AVENUE SE ON THE SQUARE			www.grinerjewelryco.com	MOULTRIE, GA 985-3700		